

AMI UEFI BIOS Flash SOP for Windows

Document Revision: v1.5

Issue Date: 2014/09/16

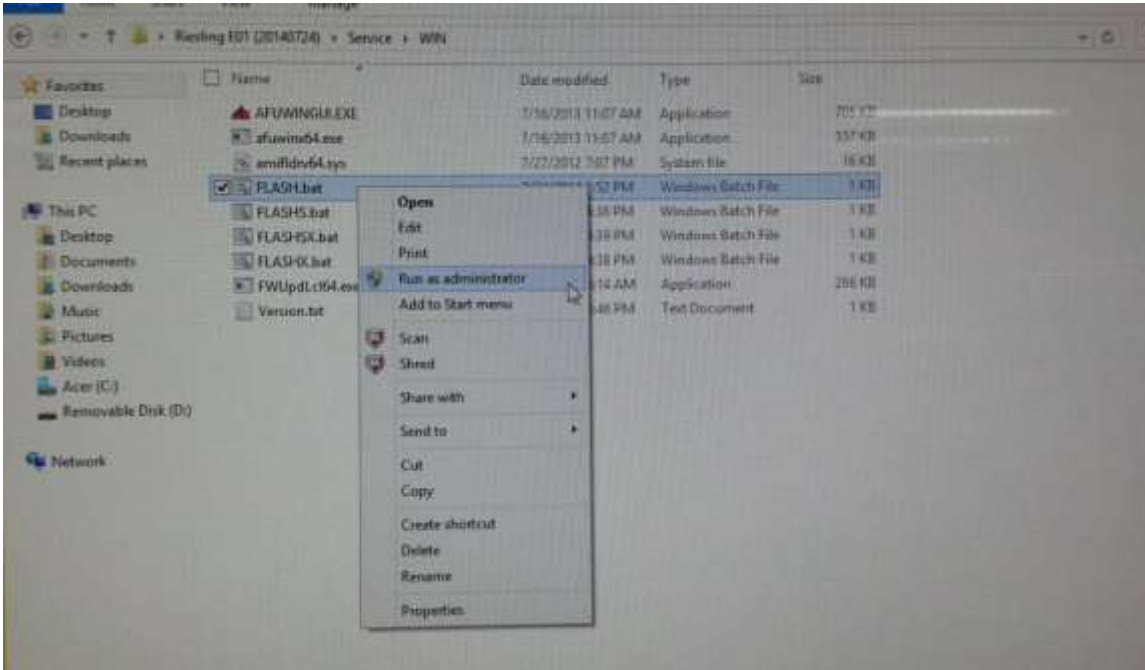
Author: Tiana Wu

Contents

1.Flash UEFI BIOS SOP for Windows 2

1. Flash UEFI BIOS SOP for Windows

1. Copy BIOS folder under OS Desktop.
2. In BIOS folder, select WIN folder and run the **batch file** as administrator.



3. Please follow your request to execute the corresponding batch file.

Flash BIOS for Service



Flash tool for service

- Folder "Service" in BIOS release package
 - Update tools for DOS, EFI and Windows
 - FLASH, FLASHS, FLASHSX and FLASHX

FLASHSX

Update ME

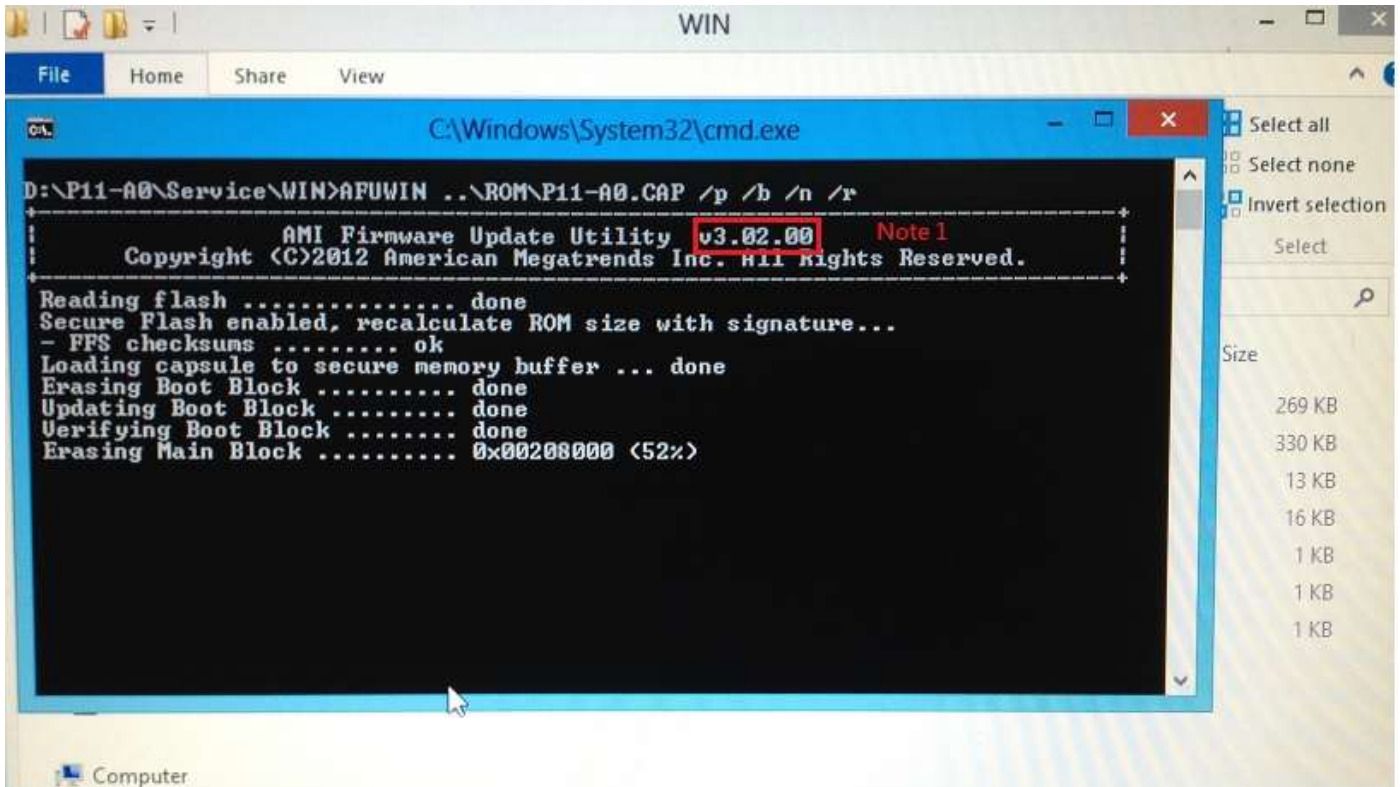
w/ S : update ME

w/o S: no ME update

Cross platform

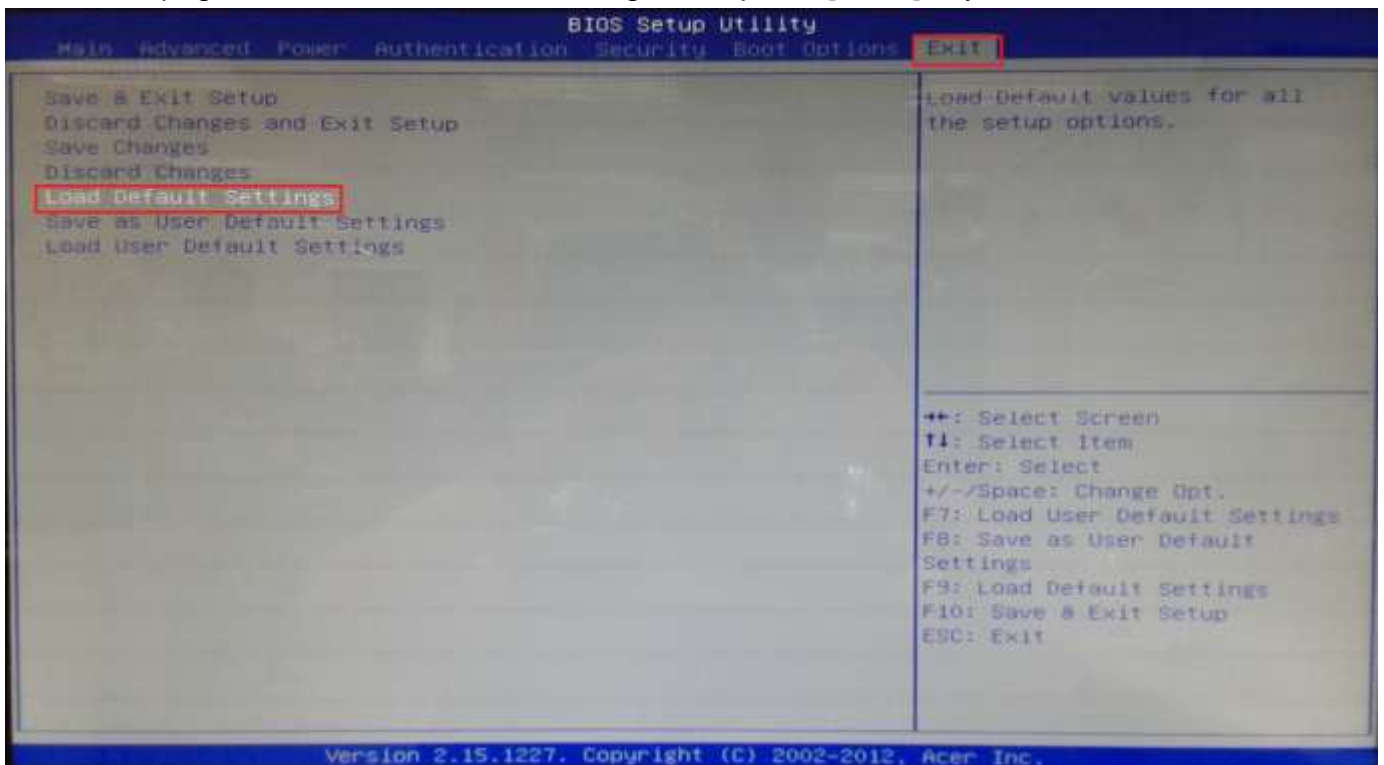
w/ X : Allow cross platform

w/o X: Check BIOS ID. Not allow to cross platform



Note 1: The AFUWIN tool version is by case.

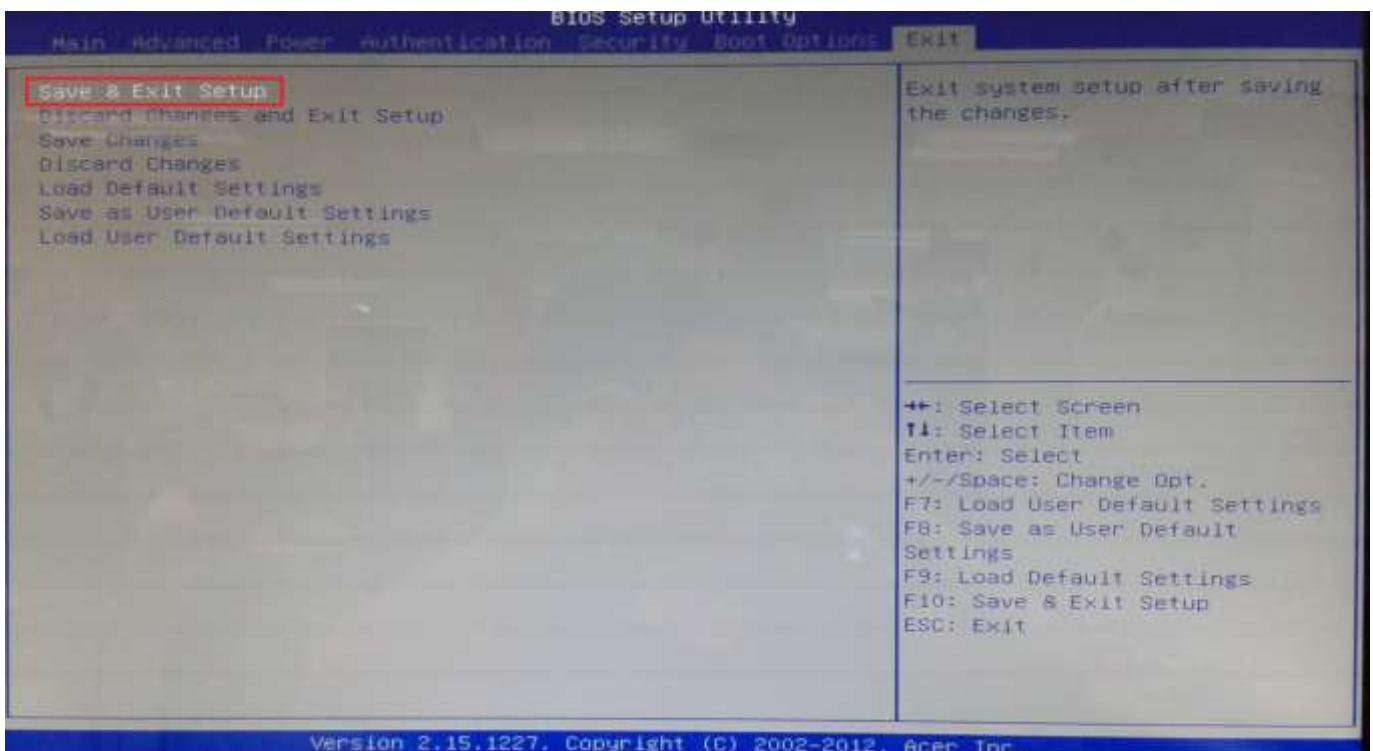
4. After finish flashing BIOS, please don't execute any programs and reboot the system directly.
5. When system reboot, please press [Del] to enter BIOS Setup
6. In "Exit" page, select "Load Default Settings" and press [Enter] key.



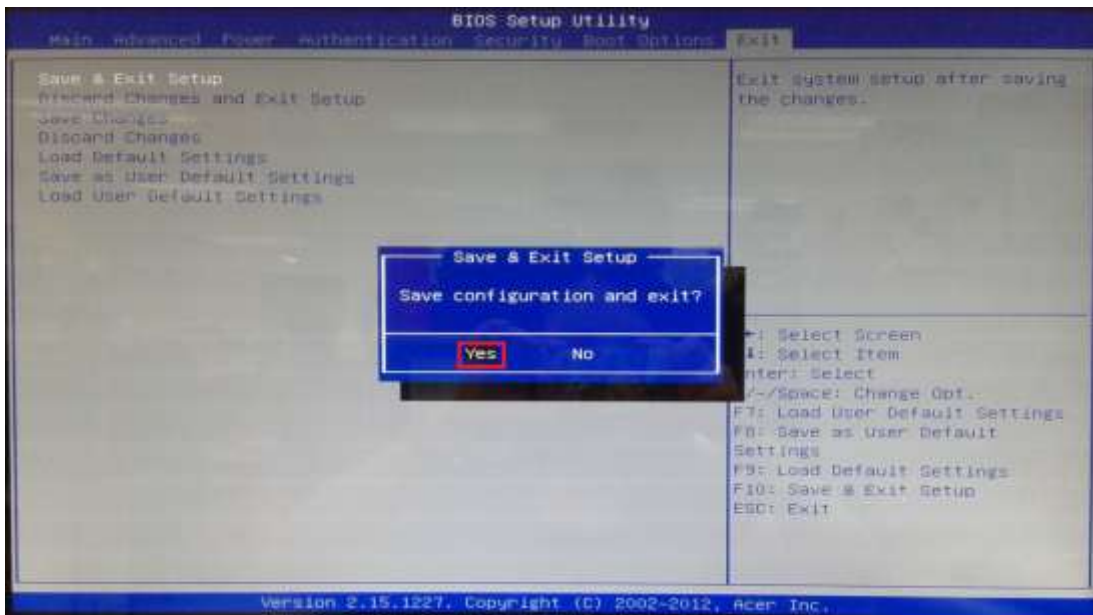
7. Select “Yes” and press [Enter] key.



8. Select “Save & Exit Setup” and press [Enter] key.



9. Select “Yes” and press [Enter] key.



10. Flash BIOS is finished.